

THIS DRAWING IS BASED ON INFORMATION BELIEVED TO BE CORRECT  
NO GUARANTEE TO THE DRAWINGS ACCURACY IS GIVEN OR IMPLIED

**IMPORTANT**

FLYING/SUSPENSION EQUIPMENT USED AT WYP MUST HAVE A CURRENT TEST CERTIFICATE. THIS INCLUDES STEEL WIRES, CHAIN STRUCKLES, BOTTLE SCREWS AND ANY OTHER PIECE OF EQUIPMENT IN THE LOAD PATH. THE MANAGEMENT WILL REFUSE PERMISSION TO USE ANY EQUIPMENT BROUGHT INTO THE THEATRE THAT DOES NOT CONFORM TO LOLER REGULATIONS.

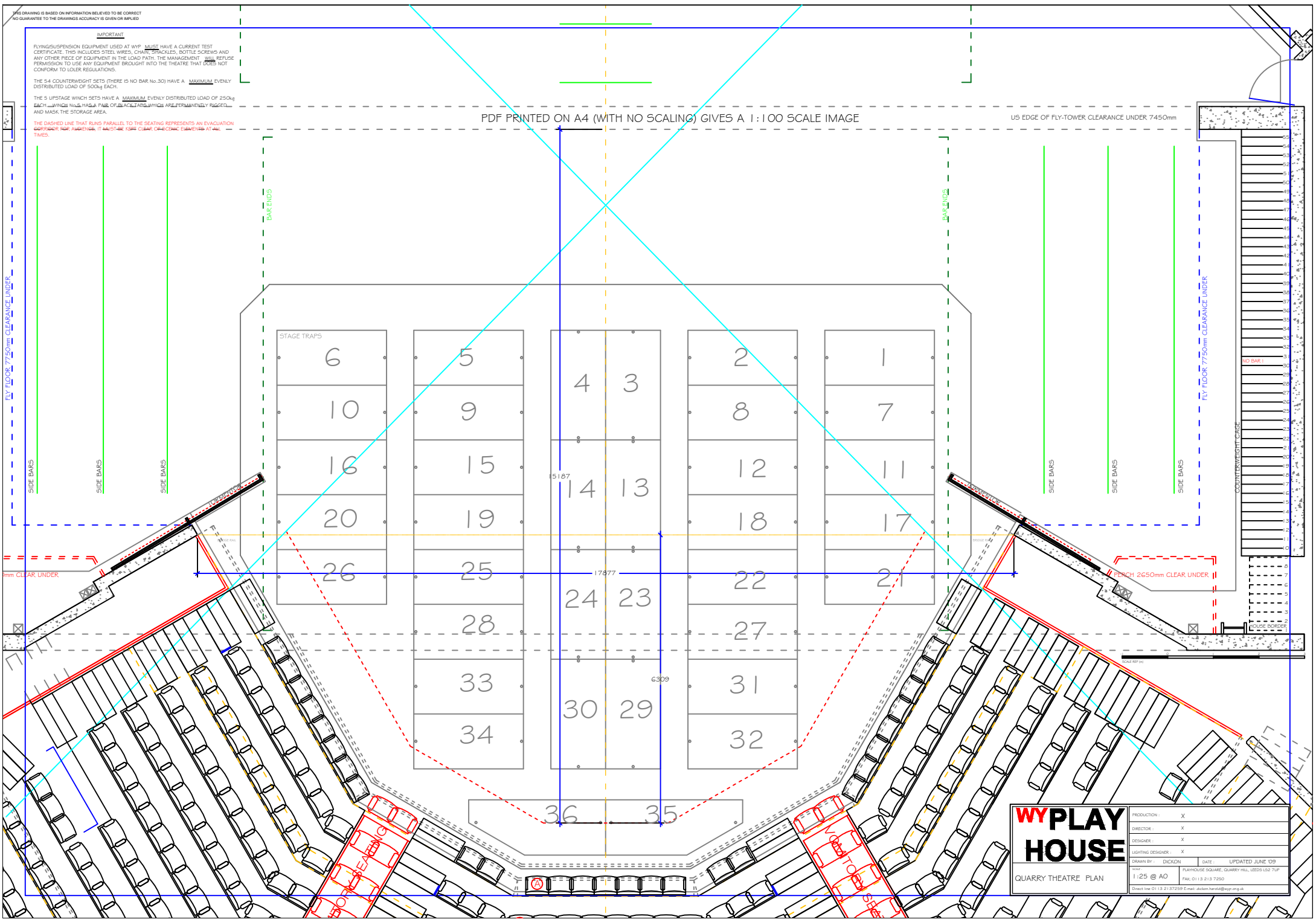
THE 54 COUNTERWEIGHT SETS (THERE IS NO BAR NO.30) HAVE A MAXIMUM EVENLY DISTRIBUTED LOAD OF 500kg EACH.

THE 5 UPSTAGE WHICH SETS HAVE A MAXIMUM EVENLY DISTRIBUTED LOAD OF 250kg EACH, WHICH HAS A PAIR OF JACKLARS WHICH ARE PERMANENTLY RIGGED AND MASK THE STORAGE AREA.

THE DASHED LINE THAT RUNS PARALLEL TO THE SEATING REPRESENTS AN EVACUATION CORRIDOR FOR AUDIENCE. IT MUST BE KEPT CLEAR OF OBSTACLES AT ALL TIMES.

PDF PRINTED ON A4 (WITH NO SCALING) GIVES A 1:100 SCALE IMAGE

US EDGE OF FLY-TOWER CLEARANCE UNDER: 7450mm



**WYPLAY HOUSE**

QUARRY THEATRE PLAN

PRODUCTION:	X
DIRECTOR:	X
DESIGNER:	X
LIGHTING DESIGNER:	X
DRAWN BY:	DICKON
DATE:	UPDATED JUNE '09
SCALE:	1:25 @ AO
PROJECT:	PLAYHOUSE SQUARE, QUARRY HILL, LEEDS LS2 7UP
CONTACT:	PAK 0113 213 7250
EMAIL:	dickon.herd@wyp.org.uk